

Nomad

SERVICE BULLETIN

EQUIPMENT AND FURNISHINGS – IMPROVED CABIN TRIM RETENTION (MODIFICATION N682 [N22 SERIES] OR N682A [N24 SERIES])

1. PLANNING INFORMATION

A. Effectivity

- (1) All N22 Series aircraft that have Mod N60 incorporated but whose log books do not record the incorporation of Mod N682 or the embodiment of Service Bulletin NMD–25–6.

Aircraft Serial Number N22S–159 to N22S–165 inclusive have this modification included as basic.

- (2) All N24 aircraft that have Mod N191 incorporated but whose log books do not record the incorporation of Mod N682A or the embodiment of Service Bulletin NMD–25–6.
- (3) All N24A Series aircraft whose log books do not record the incorporation of Mod N682A or the embodiment of Service Bulletin NMD–25–6.
- (4) This Service Bulletin does not apply to aircraft incorporating Customer options R387, R503 and G283. Also, this Service Bulletin may not apply to aircraft incorporating other non–basic airconditioning / forced air systems.

B. Reason

To eliminate insecurity of the overhead cabin trim panels caused by the panel retention flanges cracking.

C. Description

The overhead panels are reworked by removing the retaining flanges and are now fitted to and held in position by aluminium extrusions.

D. Compliance

Recommended.

E. Approval

The modification detailed herein has been approved pursuant to CAR35 and conforms with type certification requirements.

F. Manpower

Ten manhours.

G. Material, Price and Availability

The materials required are to be obtained from ASTA. Price and availability will be advised on request.

Page No	1	2	3	4	5	6	7	8
Rev No	0	0	0	0	0	0	0	0

Nomad

SERVICE BULLETIN

H. Tooling, Price and Availability

None required.

I. Weight and Balance

The following information is to be used to amend the appropriate Flight Manual and Weights and Balance Manual (if issued).

(1) N22 Series Aircraft

Weight Increase	1.3 kg	(2.9 lb)
Moment Change	7908 kg mm	(695 lb in)
Index Units (Moment/1000)	7.9	0.7

(2) N24 Series Aircraft

Weight Increase	1.6 kg	(3.6 lb)
Moment Change	10648 kg mm	(943 lb in)
Index Units (Moment/1000)	10.648	0.9

J. References

Maintenance Manual, Chap 25-20-00

Illustrated Parts Catalogue, Chap 25-20-00

K. Publications Effected

Maintenance Manual

Illustrated Parts Catalogue

Weights Balance Manual

Flight Manual

2. ACCOMPLISHMENT INSTRUCTIONS

A. Remove the overhead panels as detailed in MM. Chap 25-20-00.

B. Remove and discard the following extrusions:

(1) N22 Series, extrusions 1A/N-18-280, 1B/N-18-280 and 1C/N18-280 located at BL13.4 LH and BL13.4 RH, WL111.34.

(2) N24 Series, extrusions 1A/N-18-1032, 1B/N-18-1032 and 1C/N18-280 located at BL13.4 LH and BL13.4 RH, WL111.34.

C. Remove the retaining flanges and rework overhead panels as shown in Figure 3, detail B. After rework, report number panels, refer to Para 3. Material Information.

Nomad

SERVICE BULLETIN

- D. Using aluminium extrusion SDX 49, cut the extrusions to length and part number, refer Para 3. Material Information.
- E. Bond the packers 1U/N-18-1228 to the overhead panels, using Araldite AW106/W953U, at 1.0 in from end of panel then at approximately 12.0 in pitch as shown in Figures 1 and 2. Packer details are shown in Figure 1.
- F. Apply polyurethane tape over the packers.
- G. Refit the overhead panels as detailed in MM Chap 25-20-00. During refitting it is necessary to trim the transverse extrusions 1B/N-18-571 and 1A/N-18-571 as shown in Figure 3, Section B-B. After rework, report number extrusions 1R/N-18-1228 and 1S/N-18-1228 respectively. At the forward LH side the panel is held in position by a trim strip 1V/N-18-1228, which is to be bonded to the panel with Araldite AW106/HV953U, and three MS21207-6F6 screws, refer to Figure 3, Section A-A.
- H. Prime any exposed aluminium surfaces on the extrusions and spray finish with aluminium paint to match existing anodise finish.

3. MATERIAL INFORMATION

A. Parts required per aircraft

(1) N22 Series Aircraft

New Part No	Qty	Description	Old Part No	Instruction/ Disposition
1A/N-18-1228	1	Overhead Panel Assy RH	1/N-18-178	Rework
1B/N-18-1228	1	Overhead Panel Assy LH	1/N-18-179	Rework
1C/N-18-1228	1	Overhead Panel Assy RH	1/N-18-180	Rework
1D/N-18-1228	1	Overhead Panel Assy LH	1/N-18-181	Rework
1E/N-18-1228	1	Overhead Panel Assy RH	1/N-18-182	Rework
1F/N-18-1228	1	Overhead Panel Assy LH	1/N-18-183	Rework
1G/N-18-1228	1	Overhead Panel Assy RH	1/N-18-184	Rework
1H/N-18-1228	1	Overhead Panel Assy LH	1/N-18-185	Rework
1J/N-18-1228	1	Overhead Panel Assy RH	1/N-18-186	Rework
1K/N-18-1228	2	Extrusion (SDX49 x 43.95 in LG)		
1L/N-18-1228	2	Extrusion (SDX49 x 31.4 in LG)		
1M/N-18-1228	4	Extrusion (SDX49 x 43.45 in LG)		
1P/N-18-1228	1	Extrusion (SDX49 x 30.8 in LG)		
1R/N-18-1228	2	Extrusion	1BJN-18-571	Rework
1S/N-18-1228	3	Extrusion	1A/N-18-571	Rework
1U/N-18-1228	36	Packer .5 in wide x 6.0 in LG 0.05 in Al Alloy QQ-A-250/5 T3		

Nomad

SERVICE BULLETIN

New Part No	Qty	Description	Old Part No	Instruction/ Disposition
1V/N-18-1228	1	Trim Strip 30.5 in LG Al Alloy QQ-A-250/5 T3		
MS21207-6F6	3	Screw, Self Tapping No6 x 3/8in LG		
NASS48-P6-6	3	Screw, Self Tapping (ALT)		
4308	AR	Scotchfoam Polyurethane Tape 3/8in (3M Co)		

(2) N24 Series Aircraft

New Part No	Qty	Description	Old Part No	Instruction/ Disposition
1A/N-18-1228	1	Overhead Panel Assy RH	1/N-18-178	Rework
1B/N-18-1228	1	Overhead Panel Assy LH	1/N-18-179	Rework
1C/N-18-1228	2	Overhead Panel Assy RH	1/N-18-180	Rework
1D/N-18-1228	1	Overhead Panel Assy LH	1/N-18-181	Rework
1E/N-18-1228	1	Overhead Panel Assy RH	1/N-18-182	Rework
1A/N-18-1229	1	Overhead Panel Assy LH	1/N-18-1005	Rework
1B/N-18-1229	1	Overhead Panel Assy RH	1/N-18-1006	Rework
1H/N-18-1228	1	Overhead Panel Assy LH	1/N-18-185	Rework
1J/N-18-1228	1	Overhead Panel Assy RH	1/N-18-186	Rework
1C/N-18-1229	1	Overhead Panel Assy LH (Pre Mod N99)	1/N-18-1003	Rework
1D/N-18-1229	1	Overhead Panel Assy LH (Post Mod N99)	2/N-18-1003	Rework
1K/N-18-1228	2	Extrusion (SDX49 x 43.95 in LG)		
1J/N-18-1229	2	Extrusion (SDX49 x 48.4 in LG)		
1M/N-18-1228	4	Extrusion (SDX49 x 43.45 in LG)		
1K/N-18-1228	2	Extrusion (SDX49 x 27.95 in LG)		
1P/N-18-1228	1	Extrusion (SDX49 x 30.8 in LG)		
1E/N-18-1229	1	Overhead Panel Assy LH	1/N-18-1001	Rework
1F/N-18-1229	1	Overhead Panel Assy RH	1/N-18-1002	Rework
1R/N-18-1228	4	Extrusion	1B/N-18-571	Rework
1S/N-18-1228	3	Extrusion	1A/N-18-571	Rework
1U/N-18-1228	44	Packer .5 in wide x 6.0 in LG 0.05 in Al Alloy QQ-A-250/5 T3		
1V/N-18-1228	1	Trim Strip 30.5 in LG Al Alloy QQ-A-250/5 T3		
MS21207-6F6	3	Screw, Self Tapping No6 x 3/8 in LG		
NAS548-P6-6	3	Screw, Self Tapping (ALT)		
4308	AR	Scotchfoam Polyurethane Tape 3/8 in (3M Co)		

Nomad SERVICE BULLETIN

4. **SPECIAL TOOLS AND EQUIPMENT**

None

5. **RECORDING ACTION**

Record compliance with Service Bulletin NMD-25-6 (MOD N682 or MOD N682A), as appropriate in Airframe Log Book.

Nomad

SERVICE BULLETIN

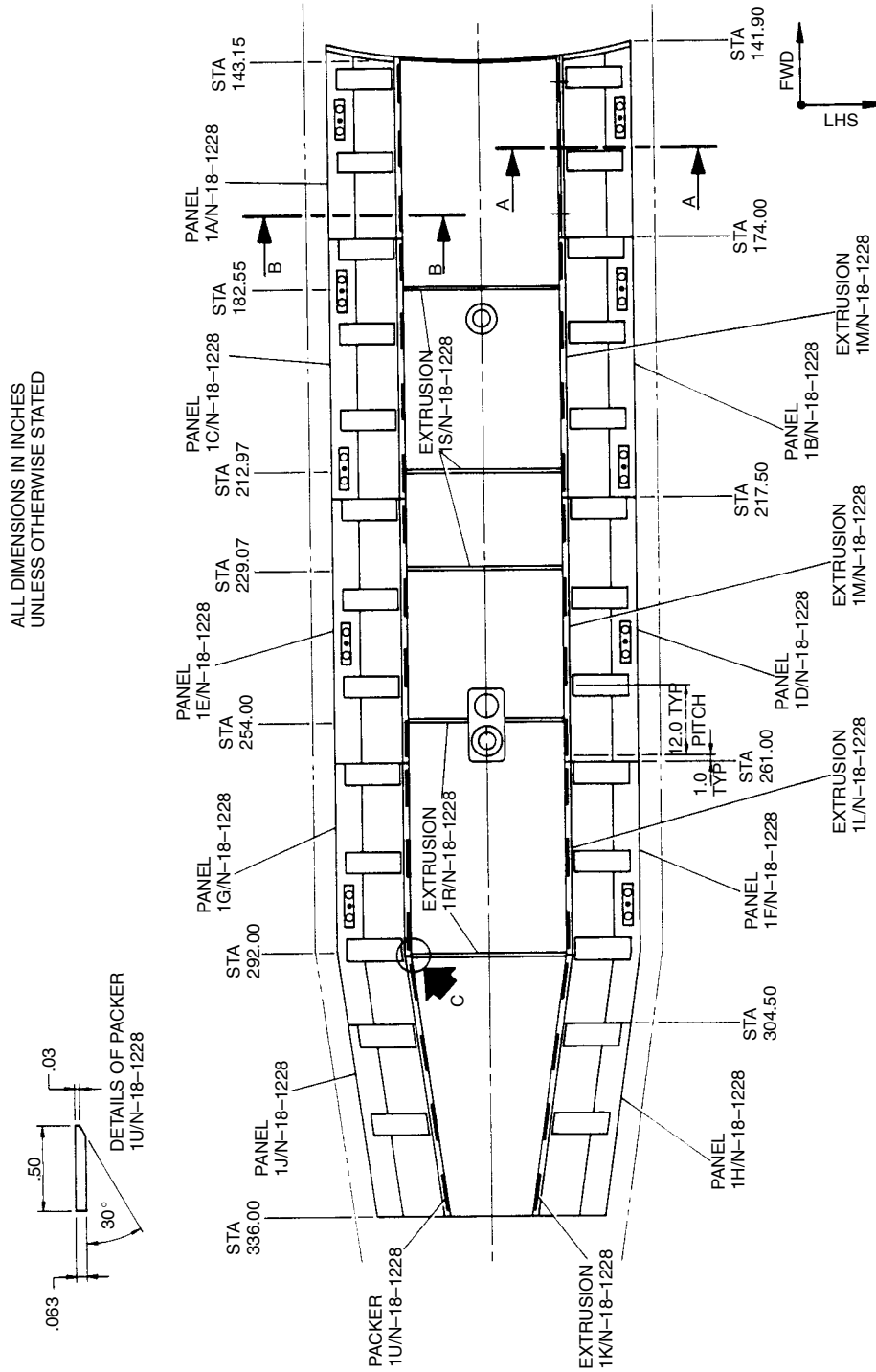


Figure 1 Position of Panels Extrusions (N22 Series)

5 Mar 90

Nomad

SERVICE BULLETIN

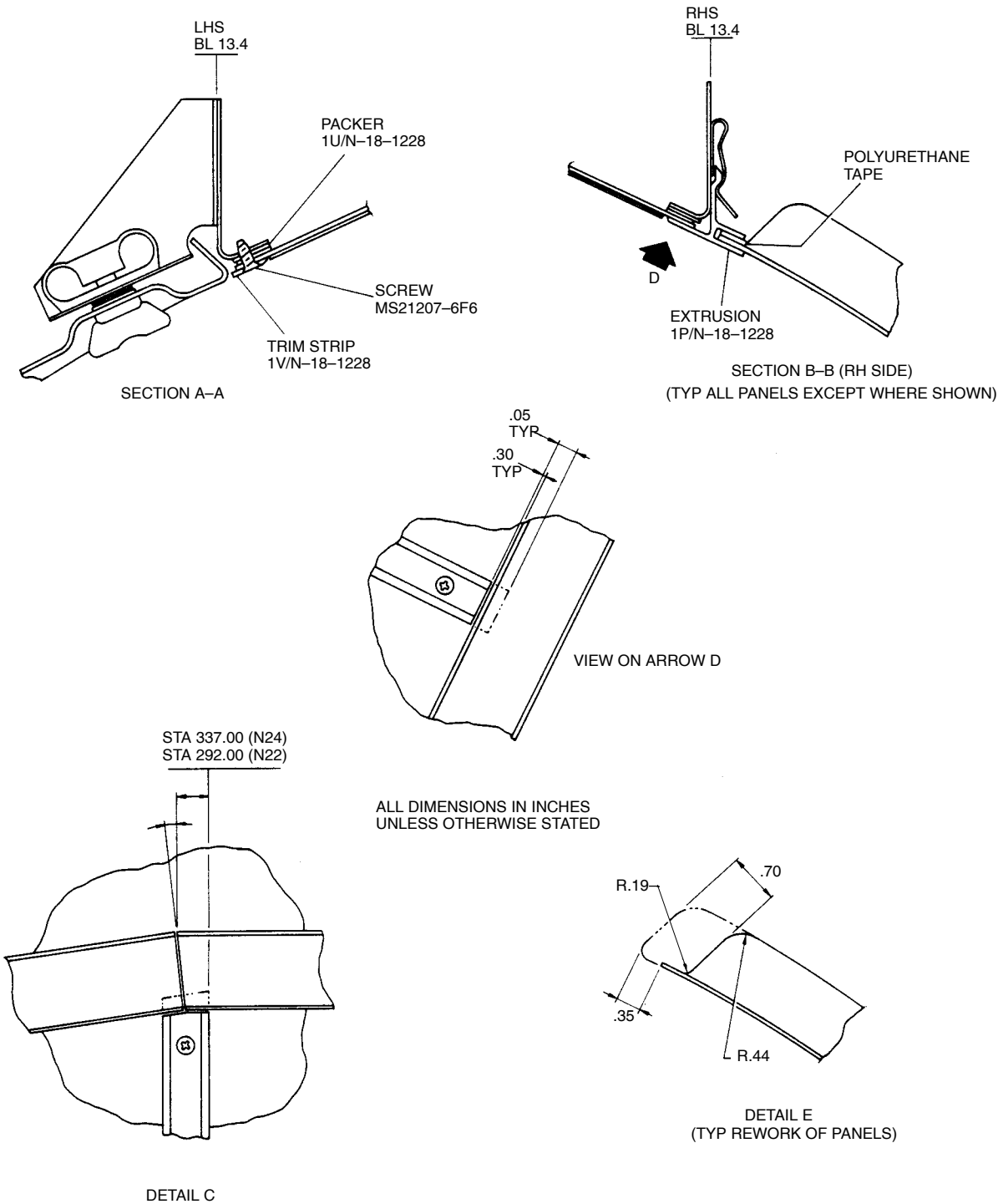


Figure 3 Overhead Panels, Rework and Fitting Details