

# ALERT SERVICE BULLETIN

SUBJECT: OPERATION OF EMERGENCY EXIT IMPEDED  
BY INTERIOR TRIM PANEL

## 1. Planning Information

### A. Effectivity

#### (1) Aircraft Affected

All Nomad N22 Series and N24 Series aircraft whose log books do not already record the embodiment of Mod N627 or compliance with Alert Service Bulletin ANMD-52-6.

#### (2) Spares Affected

<u>P/N</u>	<u>Description</u>
1/N-18-259 (Ref IPC 52-20-01 Figure 1, item 4)	Window Panel Assy, Emergency Exit

### B. Reason

Reports of excessive force being required to push the emergency exit clear of the aircraft.

### C. Description

The lower edge of the trim panel is relieved to provide minimal engagement in the trim retaining extrusion and to clear the emergency exit surround in the fuselage.

### D. Compliance

Within the next 100 hours time in service but not later than 1st October, 1984.

### E. Approval

The rework detailed herein has been approved pursuant to Air Navigation Regulation 40 and conforms with the type certification requirements.

F. Manpower

One manhour.

G. Material - Price and Availability

None required.

H. Tooling - Price and Availability

None required.

J. Weight and Balance

Negligible effect.

K. References

MM - Maintenance Manual  
IPC - Illustrated Parts Catalogue

L. Publications Affected

MM  
IPC

2. Accomplishment Instructions

- A. With the emergency exit door complete with interior trim panel installed in the fuselage, mark the trim panel along the lower edge retaining extrusion using a sharp medium hardness pencil.
- B. Remove the interior trim panel from the emergency exit door (Ref MM 25-20-00 and 52-20-00).
- C. Draw a line .05 to .07 inches below and parallel to the line drawn in step A (Ref Figure 1) and extending to within one inch of each side of the panel.
- D. With the exception of those sections one inch from each side of the panel, cut out the shaded area of the panel (Ref Figure 1) so that .05 to .07 inches of engagement with the lower trim retaining extrusion will be achieved when the panel is fitted to the door.
- E. Refit the trim panel to the emergency exit door (Ref MM 25-20-00).

G. Check the operation of the emergency exit as follows.

(1) Station a person outside the aircraft to receive the jettisoned door.

(2) Lift the cover on the inside of the door and rotate the emergency exit handle in the direction indicated to open the door. Push the door firmly outwards until clear of the fuselage checking that no excessive force is required and that the trim panel does not unduly impede the door.

H. Refit the emergency exit (Ref MM 52-20-00).

3. Materials Information

A. Parts Required per Aircraft

None.

B. Parts Modified and Re-identified by Operator

None.

C. Parts Required to Modify Spares

None.

D. Removed Parts

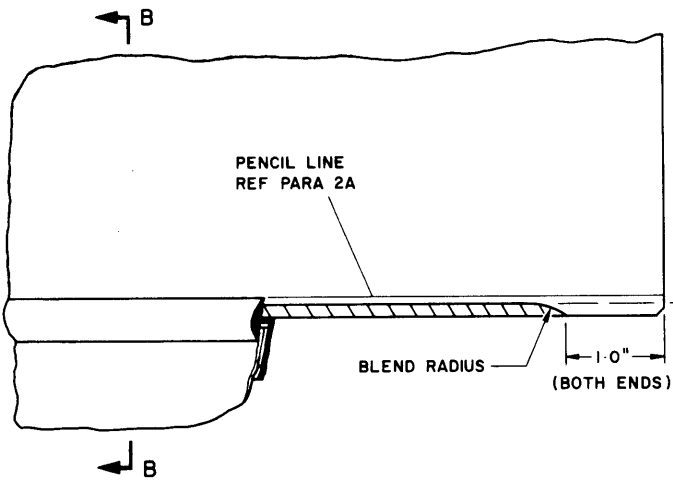
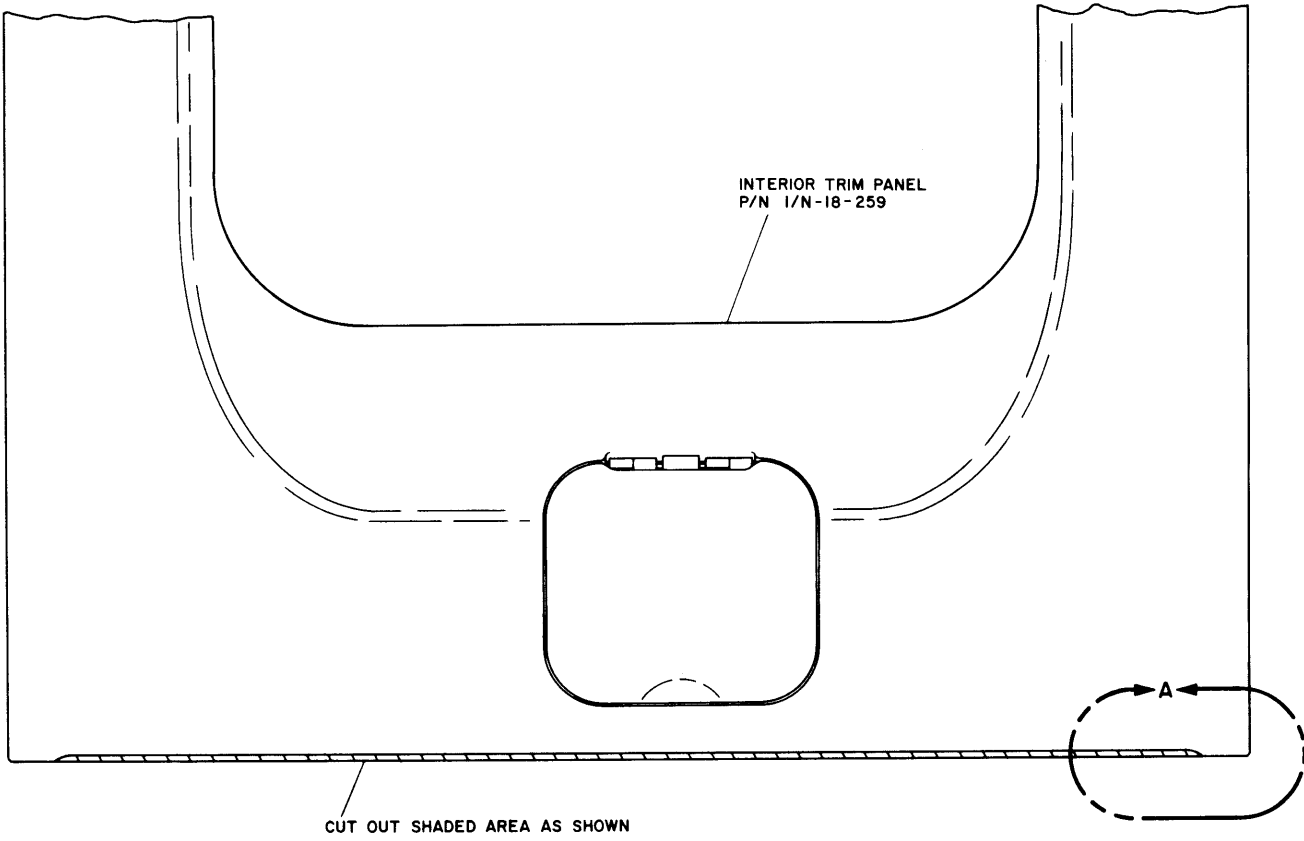
None.

E. Special Tools and Equipment

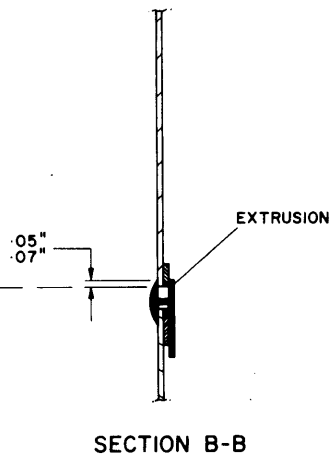
None.

4. Recording Action

Record compliance with Alert Service Bulletin ANMD-52-6 in the airframe log book.



DETAIL A



Rework of Emergency Exit Interior Trim Panel  
Figure 1