

# ***Nomad*** **SERVICE BULLETIN**

Reference No. 196

## TRANSMITTAL SHEET FOR NOMAD SERVICE BULLETIN

SERVICE BULLETIN NO.: NMD-53-7

DATED: 18 January 1990

TITLE: Fuselage - Reinforcement of Support Bracket for External Power Supply Receptacle (Mod N649).

REVISION NO.:

DATE:

ACTION: Insert Service Bulletin NMD-53-7 into Service Bulletin publication and annotate index accordingly.

REASON: To improve service life by, strengthening the External Power Supply support bracket, and stiffening the pods skin.

REMARKS:

**NMD-53-7**

# Nomad SERVICE BULLETIN

## FUSELAGE - REINFORCEMENT OF SUPPORT BRACKET FOR EXTERNAL POWER SUPPLY RECEPTACLE (MODIFICATION N649)

### 1. Planning Information

#### A. Effectivity

All Nomad N22 Series and N24 Series aircraft whose log books do not already record the incorporation of Mod N649 or compliance with Service Bulletin NMD-53-7.

NOTE: Aircraft Serial No. N22S-159 to N22S-165 have this modification incorporated as basic.

#### B. Reason

To improve service life by strengthening the support bracket and stiffening the pod skin.

#### C. Description

Reinforcing channels are added to the bracket for the external power supply receptacle and a doubler plate and reinforcing angles are added to the pod skin between pod sta 49.50 and 57.25.

#### D. Compliance

Recommended.

#### E. Approval

This modification is approved pursuant to CAR 35 and conforms with type certification requirements.

#### F. Manpower

Three manhours.

#### G. Material - Price and Availability

Kit NMD-53-7-1 can be obtained by placing a purchase order with ASTA Spare Parts Department. Delivery of the Kits will occur after July 1990.

Page No	1	2	3	4	5	6
Rev No	-	-	-	-	-	-

# Nomad

## SERVICE BULLETIN

### H. Tooling - Price and Availability

None required.

### J. Weight and Balance

Weight increase	0.07 kg (+.15 lb)
Moment change	350 kg mm (29.6 lb. in.)
Index Units	0.35 <u>kg mm</u> (.03 <u>lb. in.</u> )
	1000                      1000

### K. References

MM - Maintenance Manual, Chapter 24-40-00  
IPC - Illustrated Parts Catalogue, Chapters 24-40-00, 52-40-01  
and 53-16-01  
WDM - Wiring Diagram Manual, Chapter 24-40-00

### L. Publications Affected

Maintenance Manual  
Illustrated Parts Catalogue

## 2. Accomplishment Instructions

- A. Ensure that all electrical power is switched off and battery disconnected.
- B. Gaining access into the LH main wheel pod via the landing gear doors, remove the cover over the receptacle terminals.
- C. Raise the hinged cover and remove the two screws securing the external power receptacle. Remove the retaining nut from the circuit breaker and withdraw the external power receptacle and circuit breaker into the main wheel pod. Cover the external power receptacle and circuit breaker.
- D. Drill out the five rivets holding the hinge to the pod, ref Figure 3, and remove the hinged cover.
- E. Drill out the eight rivets holding the butt strap 1J/N-11-641 to the pod, remove and discard the butt strap.
- F. Position a channel 1B/N-11-1378 on one side of the existing mounting channel 1J/N-11-601 and, using a O 2.45mm drill, drill five holes to match channel in the mounting channel, refer to Figures 1 and 2. Deburr holes, wet assemble using pigmented jointing compound and rivet channel to mounting channel using five MS20470AD3-3 rivets. Repeat operation for the channel on the opposite side of mounting channel.

NMD-53-7

# Nomad

## SERVICE BULLETIN

- G. Pin the butt strap 1A/N-11-1378 and angles 1D/N-11-1378 and 1E/N-11-1378 in position as shown in Figures 2 and 3. Using a 2.45mm drill, drill additional rivet holes required in pod skin and pod frames at pod sta 49.50 and 57.25. Disassemble and deburr holes. Wet assemble butt strap and angles with pigmented jointing compound and rivet in position using 12 MS20470AD3-3 and eight MS20470AD3-4 rivets as shown in Figures 1 and 3.
- H. Drill out the five rivets holding the hinge to the hinged cover. Wet assemble packer 1C/N-11-1378 between hinge and hinge cover using pigmented jointing compound and rivet together using five MS20470AD3-4 rivets.
- J. Wet assemble the hinged cover to the pod using pigmented jointing compound and rivet in position using five MS20470AD3-4 rivets.
- K. Clean all swarf from around the external power supply receptacle bracket area.
- L. Touch up any bare metal with zinc chromate primer. Touch up external surfaces to match aircraft.
- M. Reassemble external power supply receptacle and cover and refit the circuit breaker.

### 3. Material Information

One Kit P/N NMD-53-7-1 is required per aircraft. Each Kit comprises the following items:

<u>NEW P/N</u>	<u>QTY</u>	<u>TITLE</u>	<u>OLD P/N</u>	<u>INSTRUCTIONS/ DISPOSITION</u>
1A/N-11-1378	1	Butt Strap	1J/N-11-641	Scrap
1B/N-11-1378	2	Channel		
1C/N-11-1378	1	Packer		
1D/N-11-1378	1	Angle		
1E/N-11-1378	1	Angle		
MS20470AD3-3	22	Rivet		
MS20470AD3-4	18	Rivet		

### 4. Special Tools and Equipment

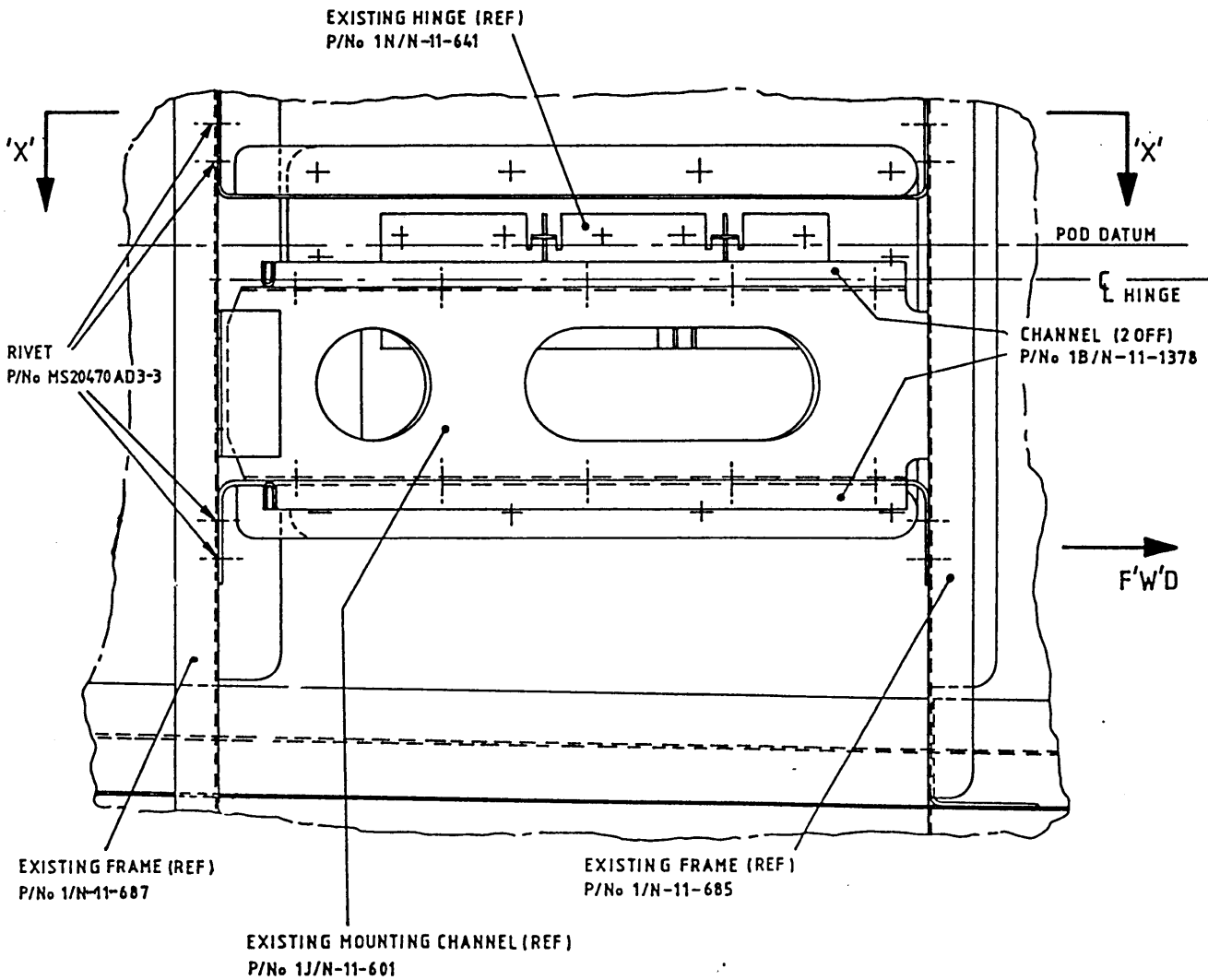
None

### 5. Recording Action

Record compliance with Service Bulletin NMD-53-7 in Airframe Log Book.

NMD-53-7

# Nomad SERVICE BULLETIN



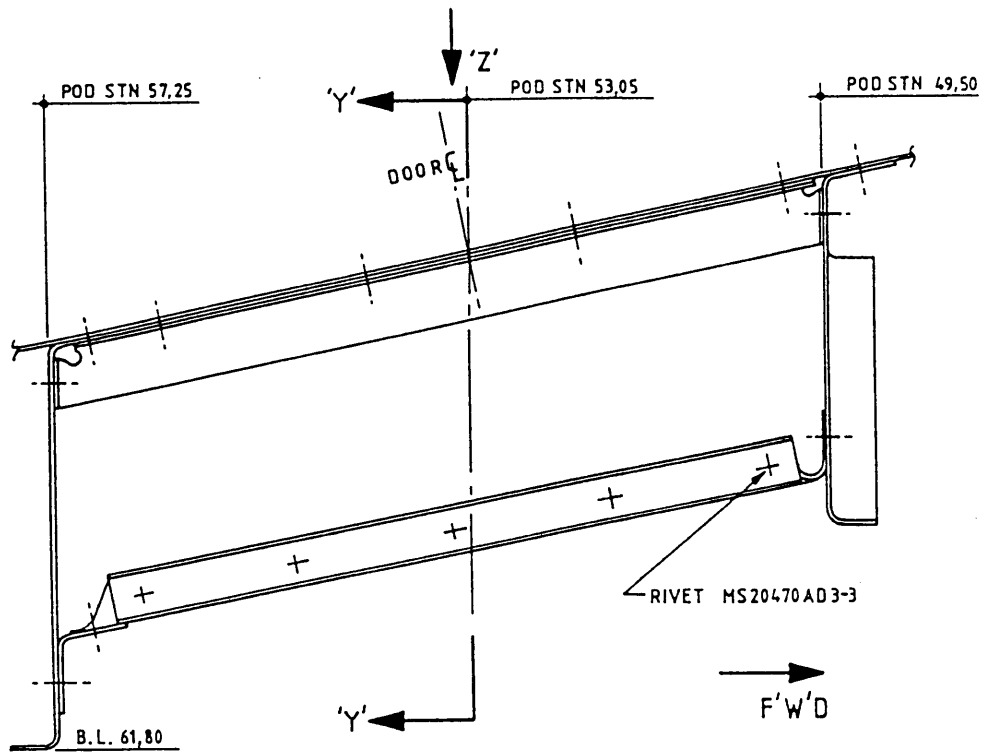
VIEW LOOKING OUTBOARD AT BL61.80

FITTING REINFORCING CHANNELS AND ANGLES

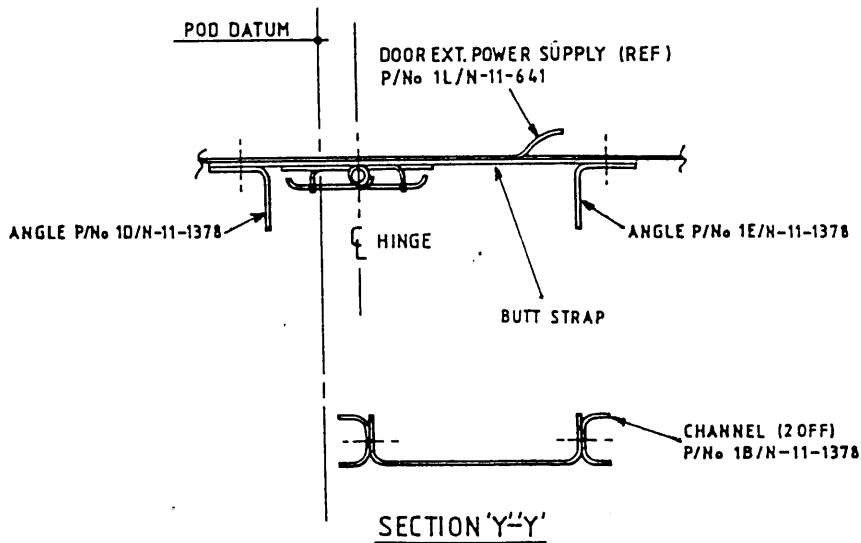
FIGURE 1

NMD-53-7

# Nomad SERVICE BULLETIN



SECTION 'X'-X'  
REFER TO FIG 1

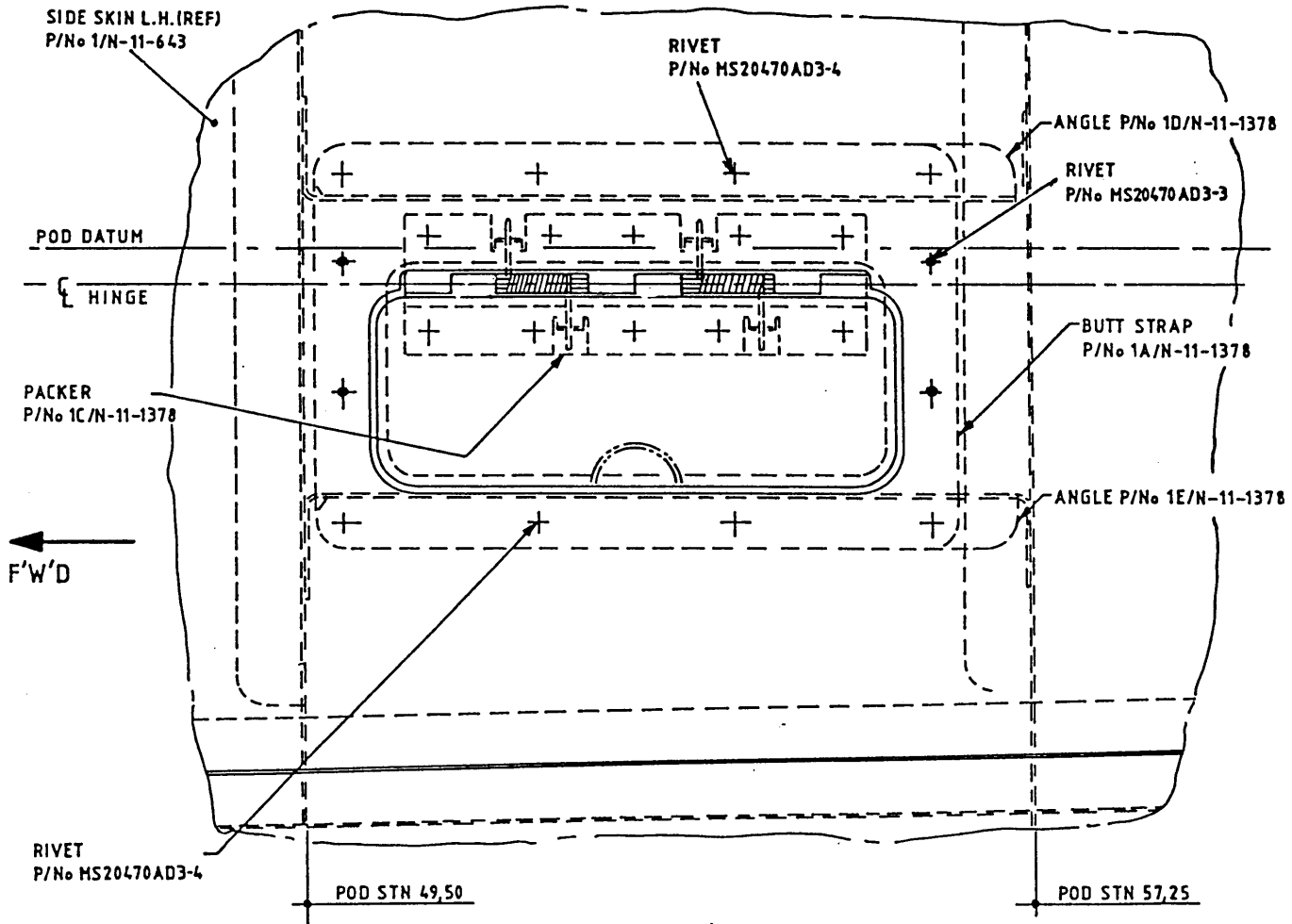


DETAILS OF FITTING REINFORCING CHANNELS  
AND ANGLES

FIGURE 2

NMD-53-7

# Nomad SERVICE BULLETIN



VIEW ON ARROW Z  
(REF FIGURE 2)

FITTING BUTT STRAP AND HINGED COVER  
FIGURE 3

NMD-53-7